

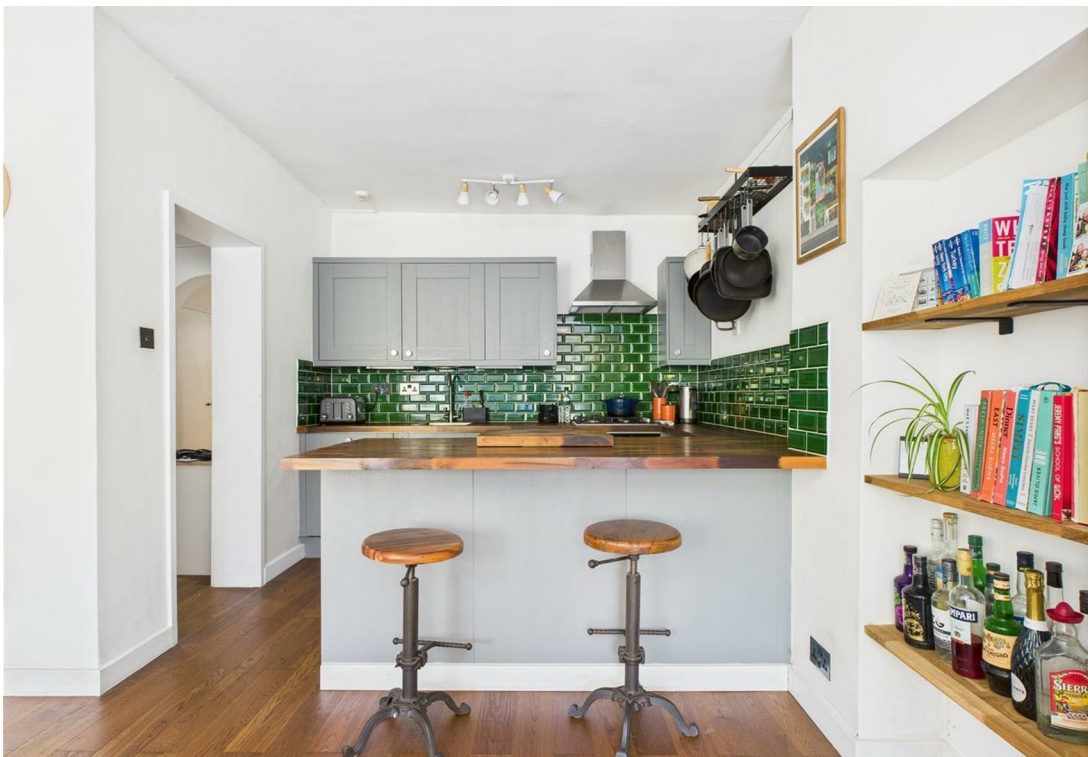




A STYLISH AND BEAUTIFULLY PRESENTED one bedroom flat in a CONVERTED GRADE I LISTED BUILDING on HOVE'S FINEST SEAFRONT SQUARE. The accommodation comprises entrance hall, SOUTH ASPECT OPEN PLAN LOUNGE/KITCHEN, FITTED KITCHEN AREA, SHOWER ROOM, GCH, SHARE OF FREEHOLD, EPC C.

- BEAUTIFUL AND STYLISHLY PRESENTED
- CONVERTED GRADE I LISTED BUILDING
- HOVE'S FINEST SEAFRONT TERRACE
- SOUTH ASPECT LOUNGE/KITCHEN
- FITTED KITCHEN AREA
- ONE BEDROOM
- SHOWER ROOM
- REAR PATIO/GARDEN
- OWN STREET ENTRANCE





LOWER GROUND FLOOR

ENTRANCE HALL

Wardrobe with plumbed space for washing machine, cupboard housing electric meter, wooden flooring, borrowed light window, radiator.

OPEN PLAN LOUNGE/KITCHEN

Two South aspect sash windows, feature fireplace with wooden mantle, tiled, cast iron inset, stone hearth, two radiators.

KITCHEN AREA

Modern fitted kitchen comprising a range of eye level wall cupboards base upboards and drawer units, wood block worktops, inset stainless steel sink unit with mixer tap, electric oven, gas hob with stainless steel extractor hood over, dishwasher, fridge, freezer.

BEDROOM

Multi glass pane door with windows over and to side to PATIO/GARDEN, cupboard housing boiler, walk-in wardrobe, wooden flooring, radiator.

SHOWER ROOM

Fitted with white suite comprising tiled shower cubicle with fixed and flexible hose shower heads, wash hand basin with mixer tap and drawer under, fitted mirror over, low level close couple WC, tiled walls, tiled floor, ladder style heated towel rail, extractor fan, frosted glass window.

PATIO/GARDEN

Accessed from BEDROOM.

ADDITIONAL INFORMATION

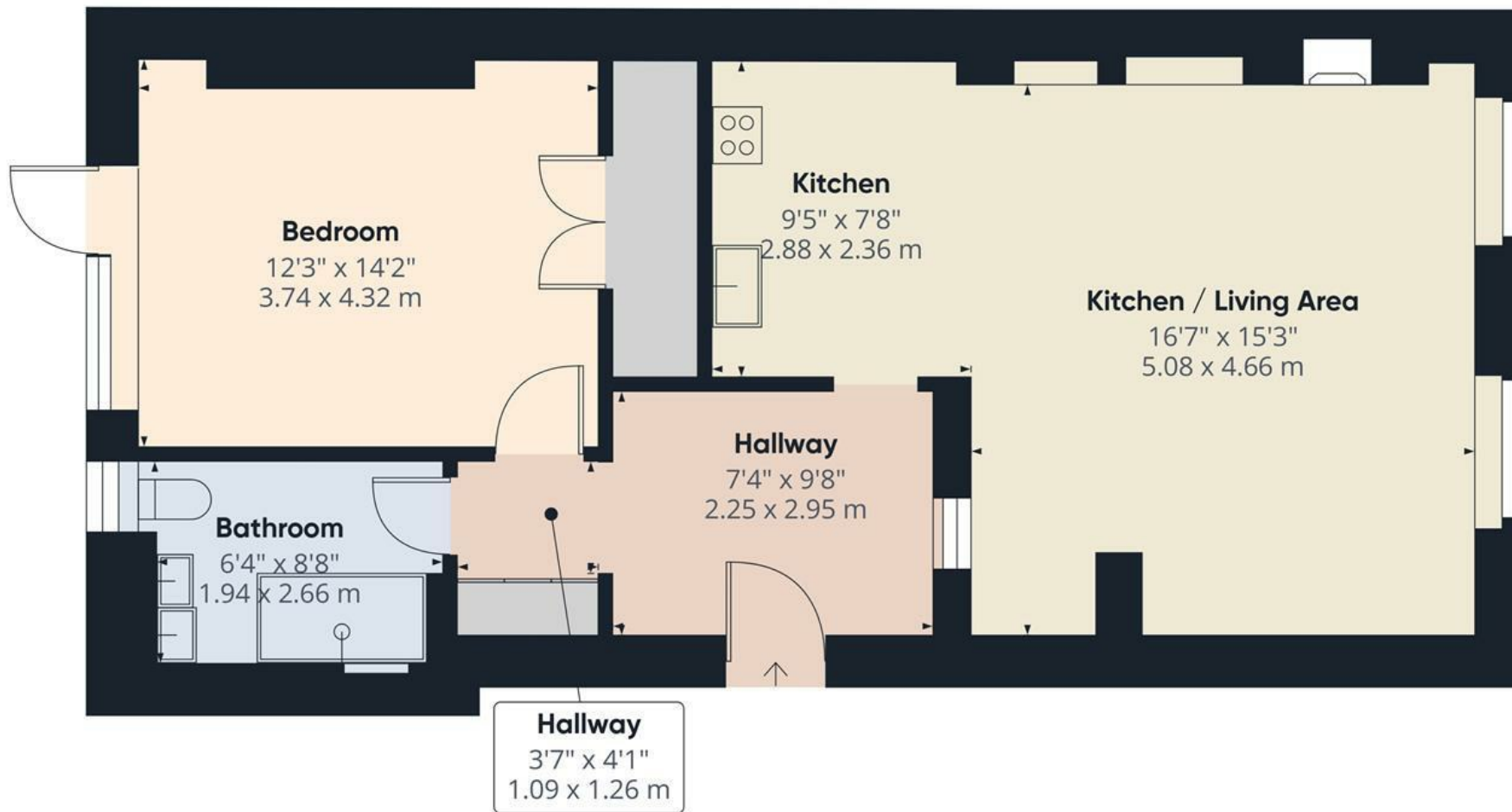
Lease - Leasehold with Share of Freehold

Maintenance - £1,400 approximately per annum

Ground Rent - £0

Council Tax Band B - £1,910.06





Approximate total area^m

686 ft²

63.8 m²

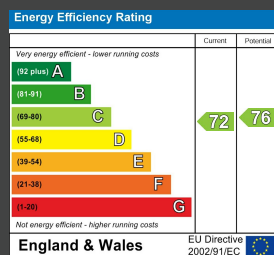
(1) Excluding balconies and terraces

Calculations reference the RICS IPMS 3C standard. Measurements are approximate and not to scale. This floor plan is intended for illustration only.

GIRAFFE360



ENERGY PERFORMANCE CERTIFICATE (EPC)



DISCLAIMER

Money Laundering Regulations 2007: Intending purchasers will be asked to produce identification documentation upon acceptance of any offer. We would ask for your cooperation in producing such in order that there will not be a delay in agreeing the sale. General: Whilst we endeavour to make our sales particulars fair, accurate and reliable they are only a general guide to the property and accordingly if there is any point which is of particular importance to you please contact the office and we will be pleased to check the position for you. Buyers must check the availability of any property and make an appointment to view, before embarking on any journey to see a property. Items shown in photographs are NOT included unless specifically mentioned within the sales particulars. They may however be available by separate negotiation. Measurements: These approximate room sizes are only intended as general guidance. You must verify the dimensions carefully before ordering carpets or any built in furniture. Services: Please note we have not tested any apparatus, equipment, fixtures and fittings or services and so cannot verify that they are in working order or fit for the purpose. A Buyer is advised to obtain verification from their Solicitor or Surveyor. References to the Tenure of a Property are based on information supplied by the Seller. The Agent has not had sight of the title documents. A Buyer is advised to obtain verification from their Solicitor. These particulars are issued in good faith but do not constitute representations of fact or form part of any offer or contract.

Tel: 01273 323000
Email: sales@brices.co.uk
www.brices.co.uk

360°
brices
VIRTUAL VIEWINGS

brices
sales & lettings